

# LOWER ESOPUS CREEK

## APPENDIX A

# Lower Esopus Watershed

Ulster County, New York

## Map Features

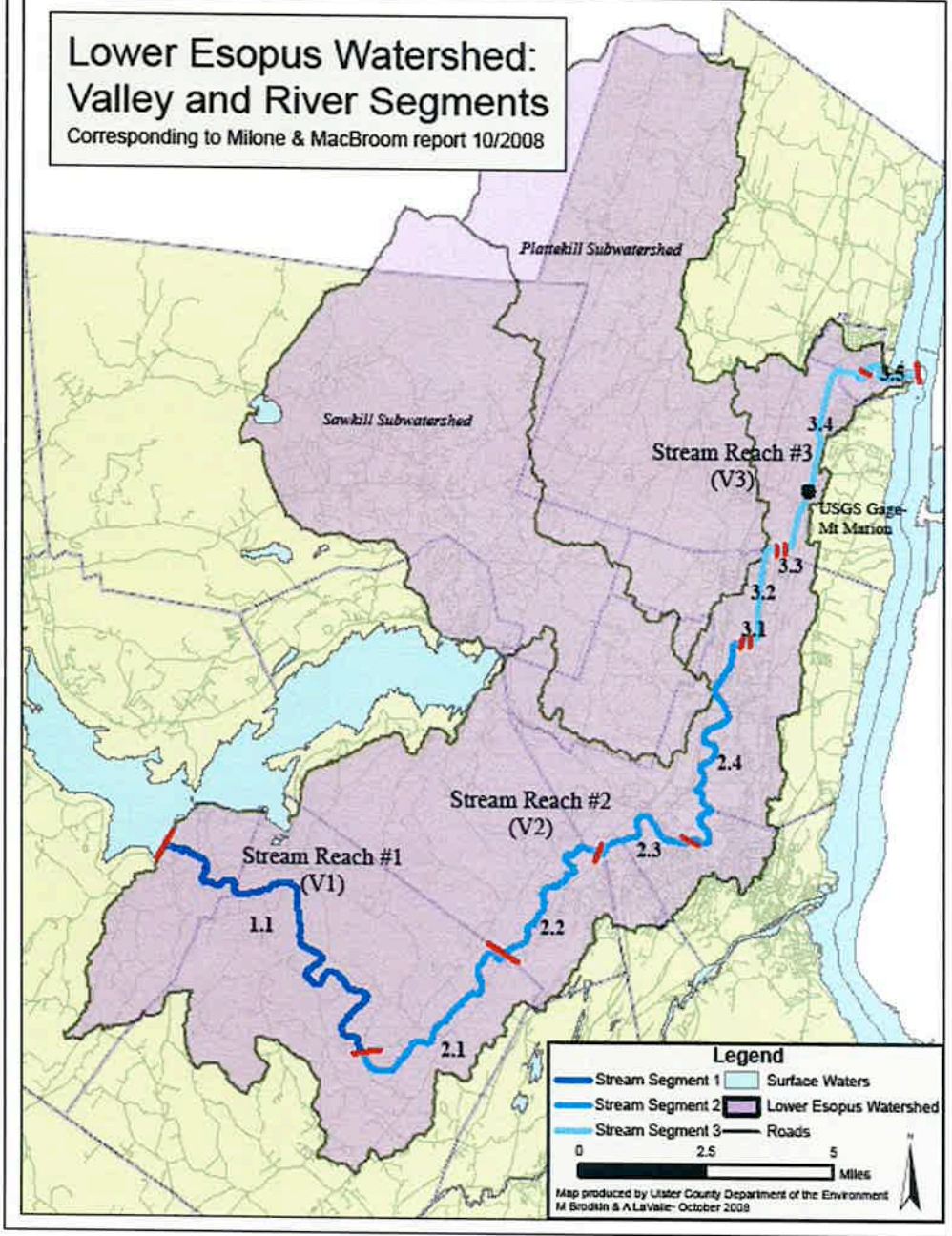
- Lower Esopus Watershed
- Town Boundaries
- Catskill Park



Esopus Creek Digitizing: Lynda Morgan  
Map Composition: B Morgan, April 2006

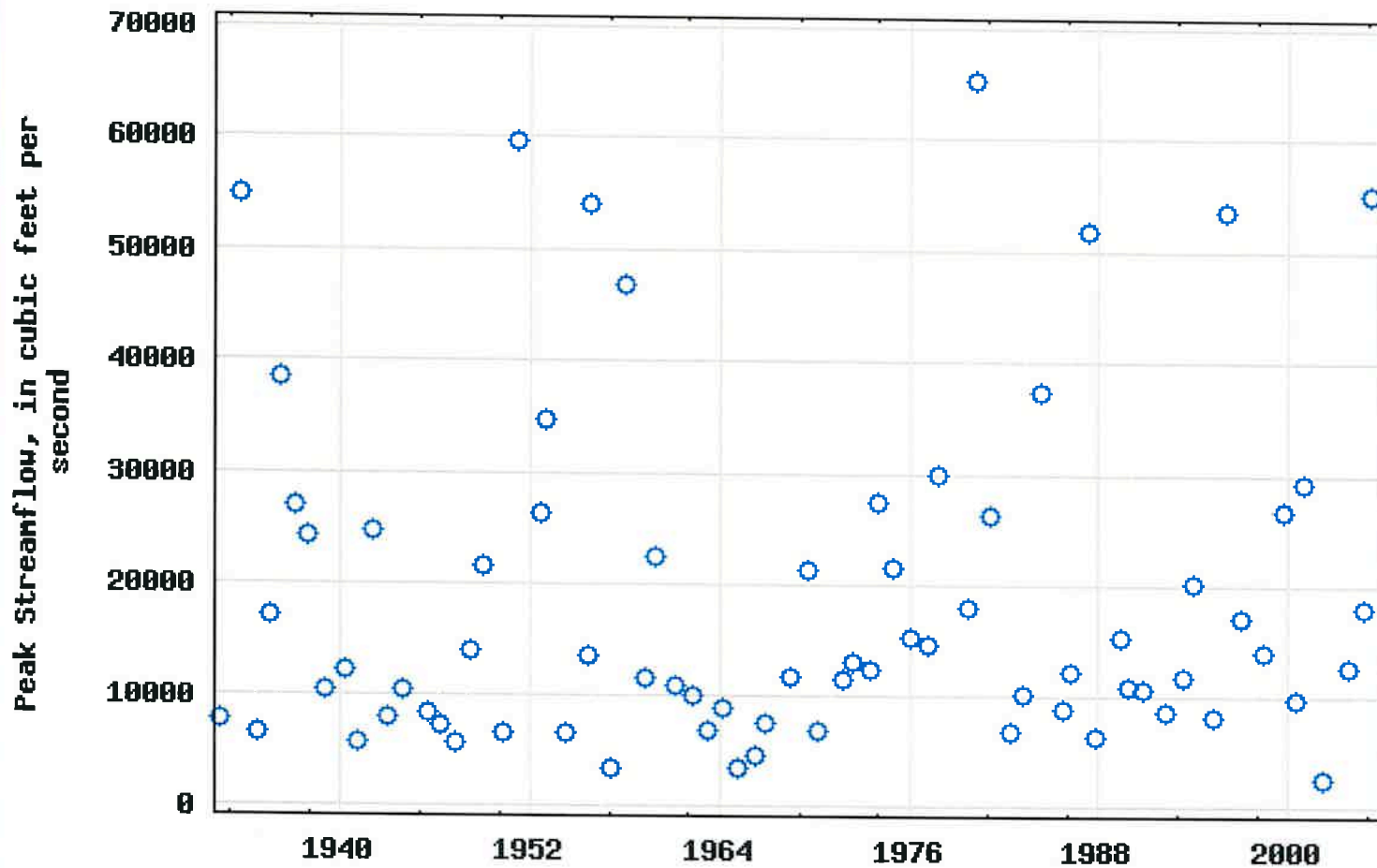
# Lower Esopus Watershed: Valley and River Segments

Corresponding to Milone & MacBroom report 10/2008





### USGS 01362500 ESOPUS CREEK AT COLDBROOK NY

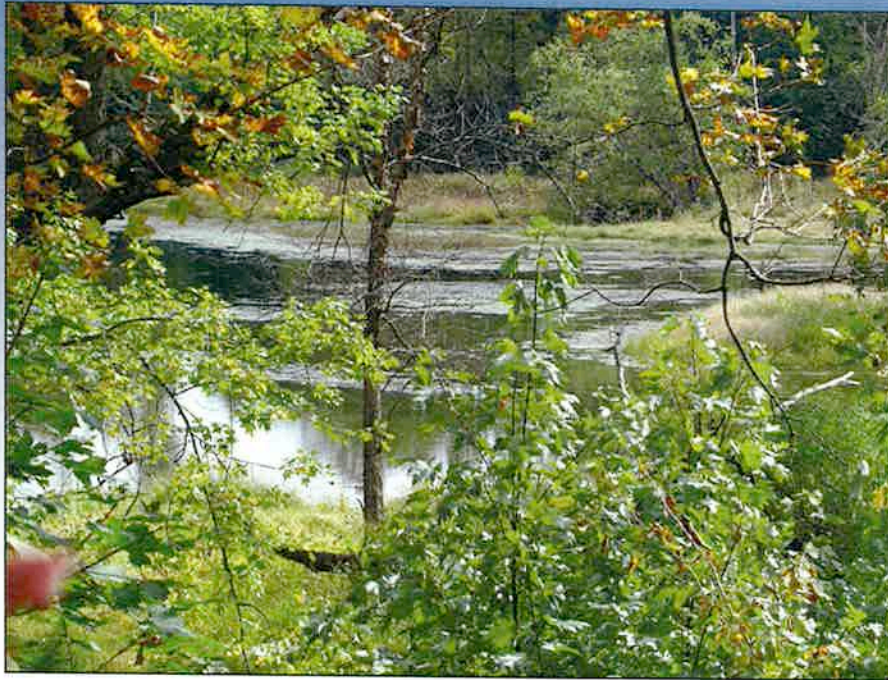


# Hurley Mt. Road

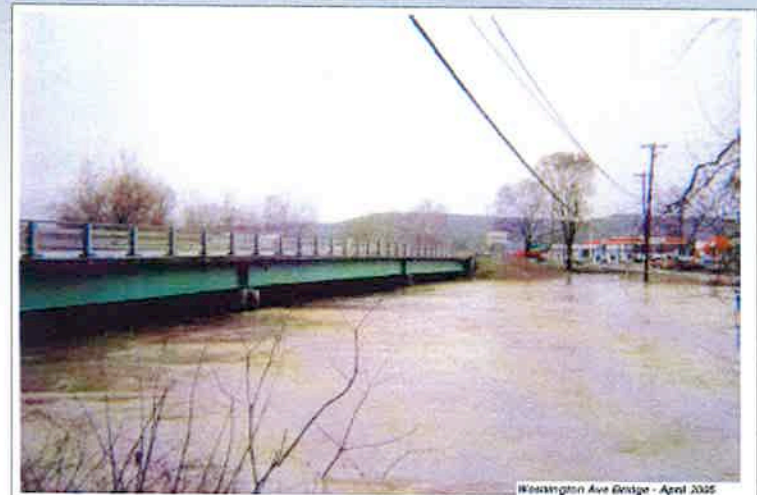
## Low Flow Conditions



# Gravel Ponds



# I-87 Area



Esopus Creek near the intersection of Route 28, 209, 87 and NYS Thruway, Kingston  
Washington Ave Bridge - April 2005

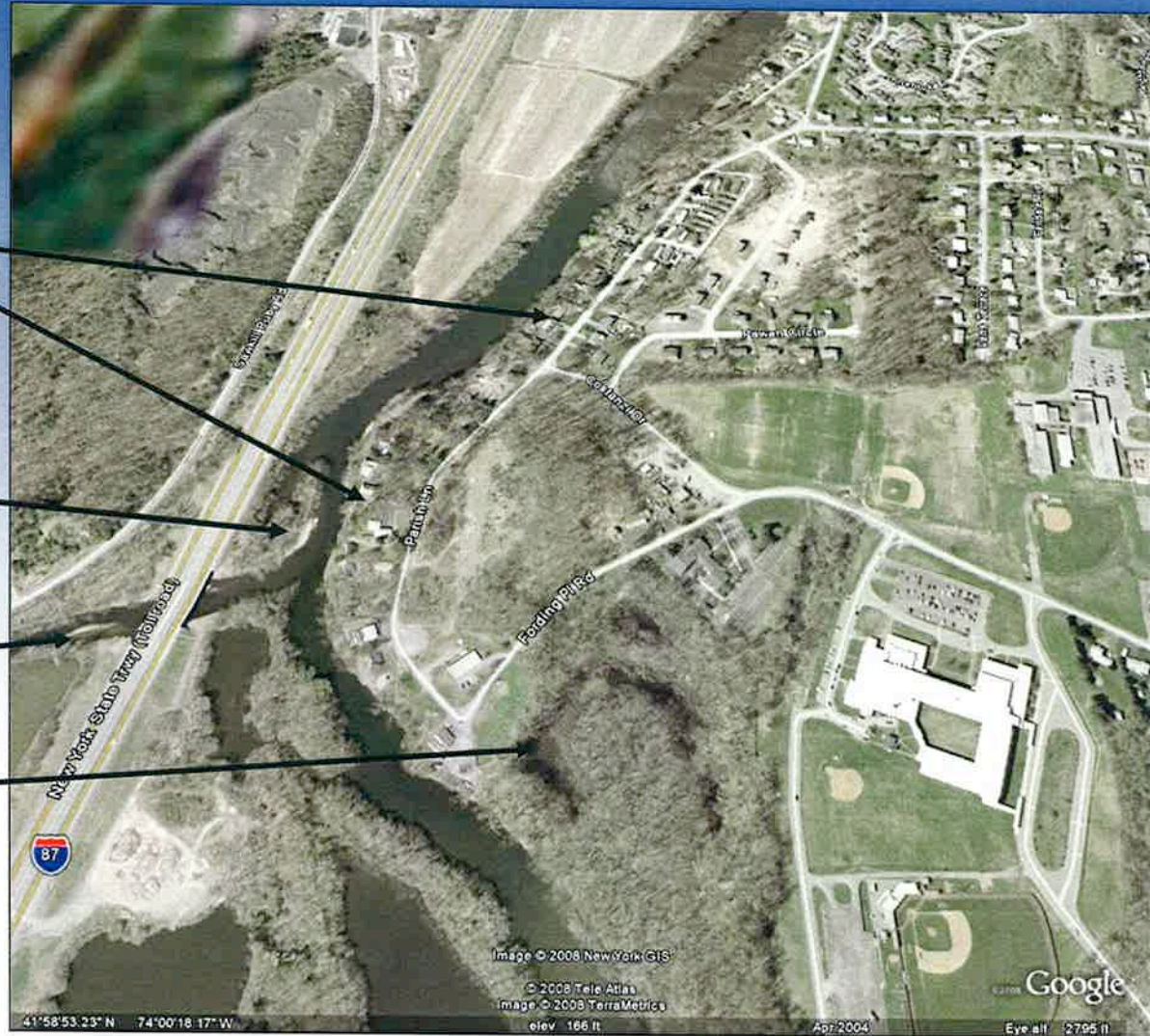
# Ulster

**HIGH HAZARD  
AREAS**

**CONFLUENCE  
BAR**

**SAWKILL CREEK**

**OX-BOW LAKE**



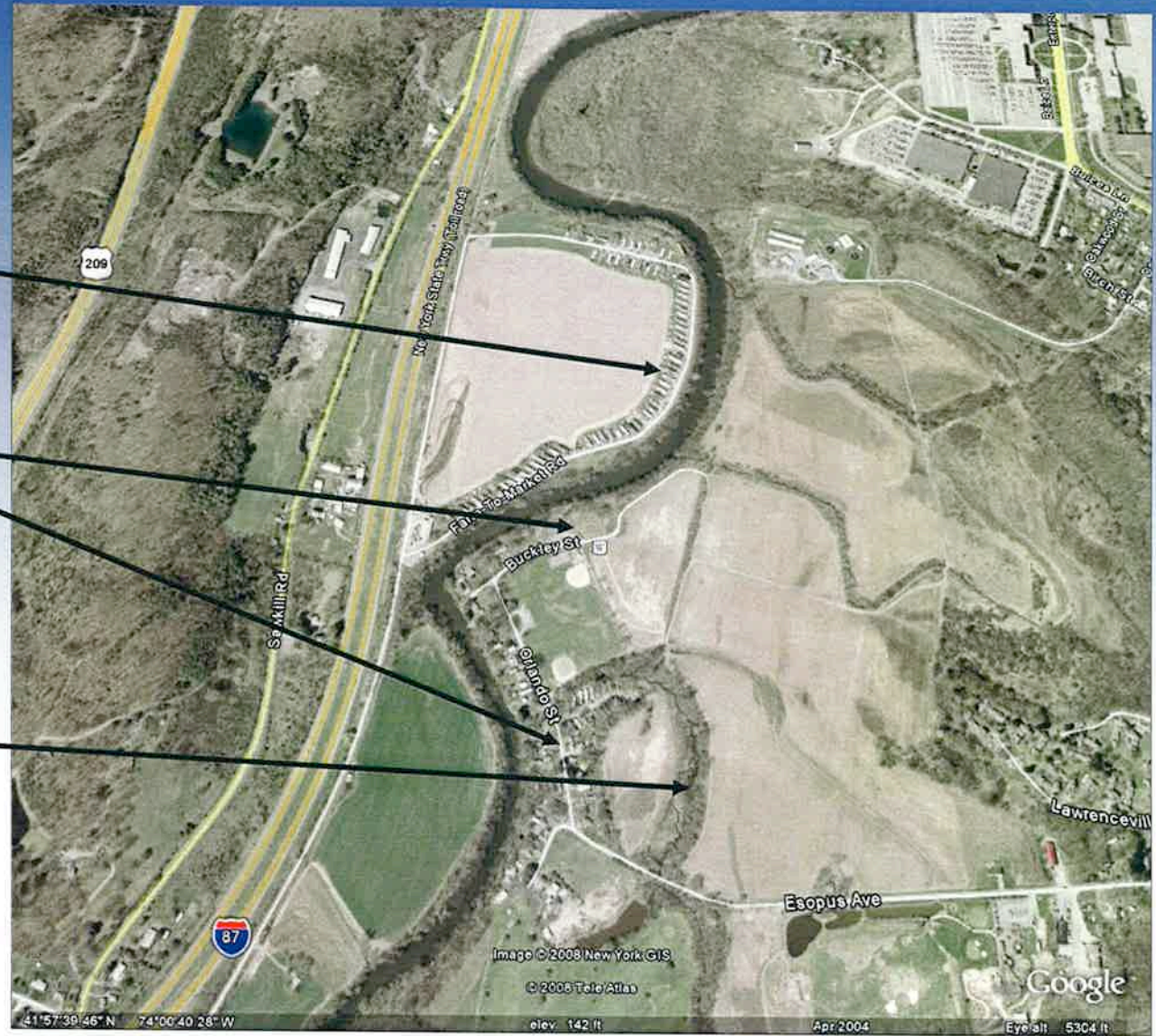


# Ulster

**FORMER  
TRAILER  
HOMES**

**HIGH HAZARD  
AREAS**

**MEANDER  
SCROLL**



# Buckely St, Ulster

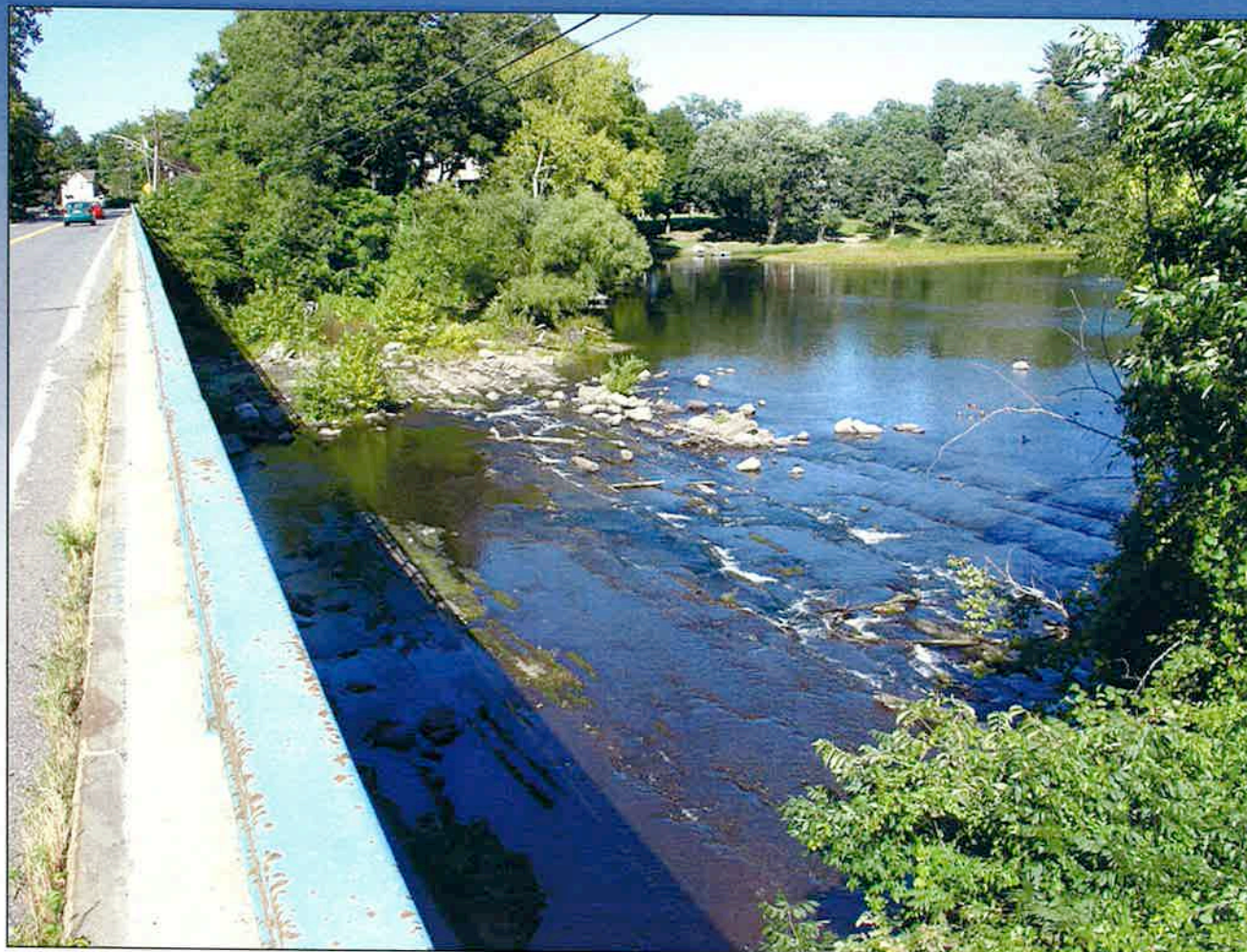


(Photographs cont.)



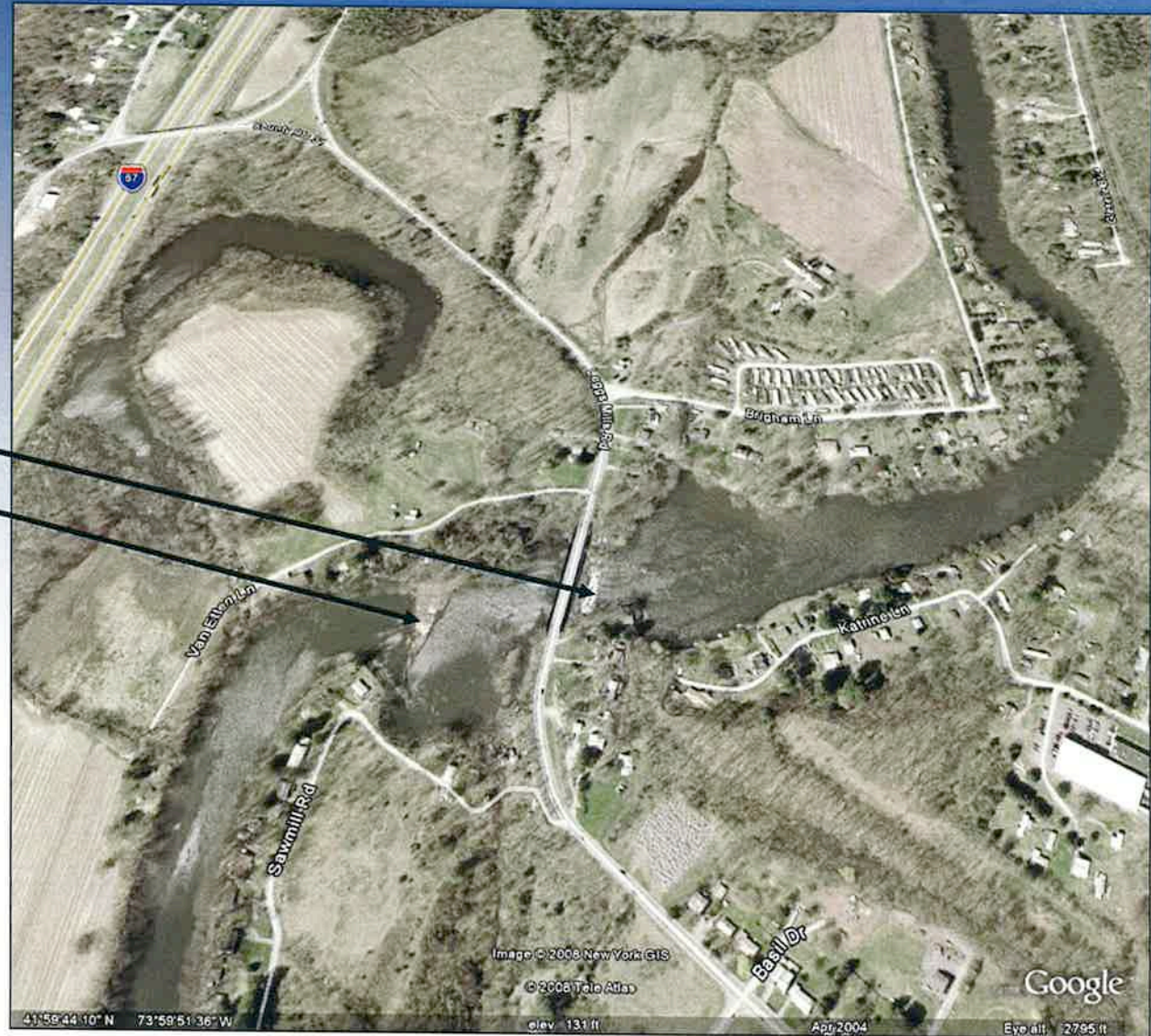
Esopus Creek near Esopus Avenue, Town of Ulster

# Leggs Mill Road



# Leggs Mill Road

**BEDROCK  
GRADE  
CONTROLS**



# Glasco Tnpk, Confined Channel





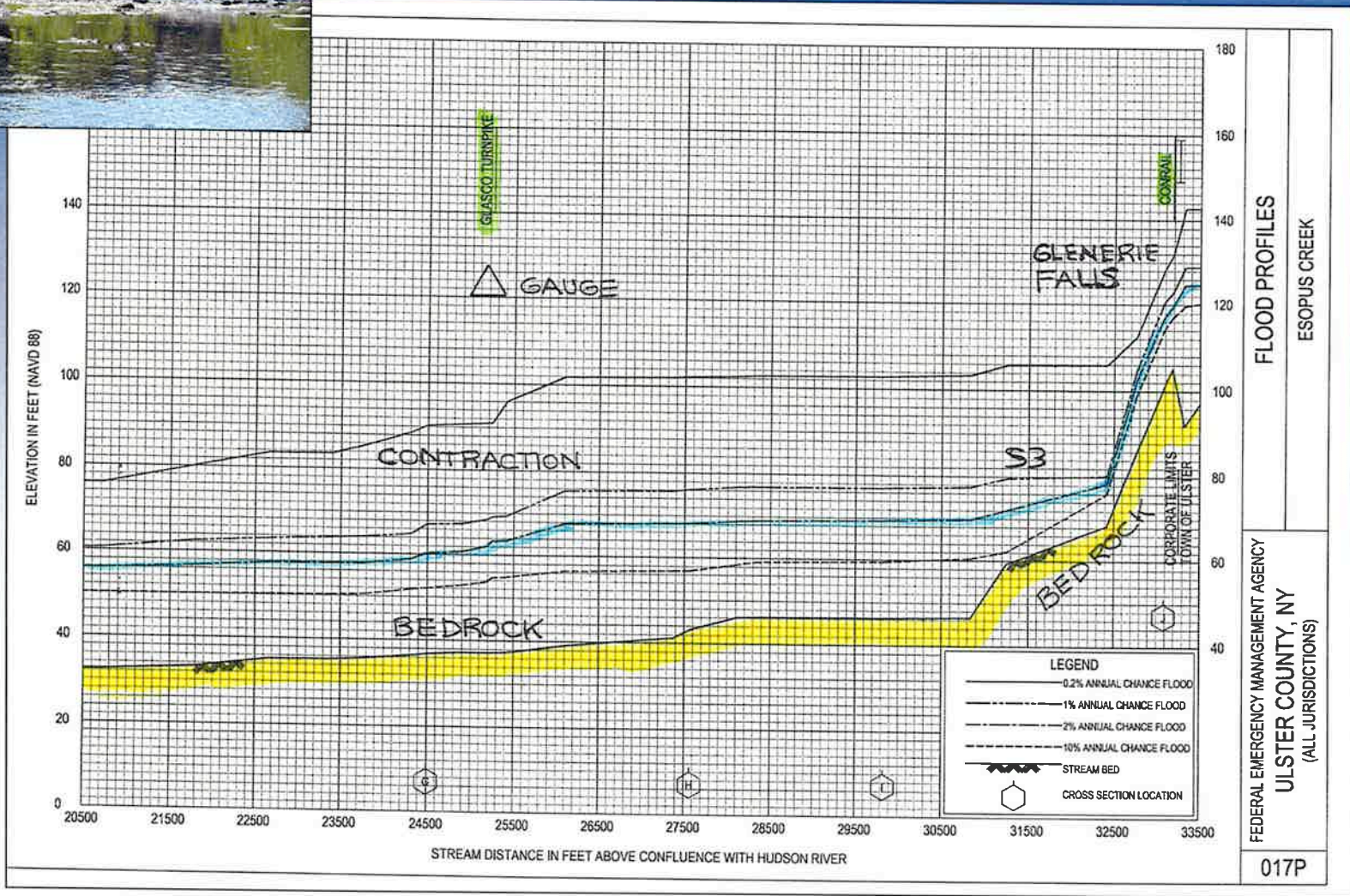
# ESOPUS CREEK ESTUARY

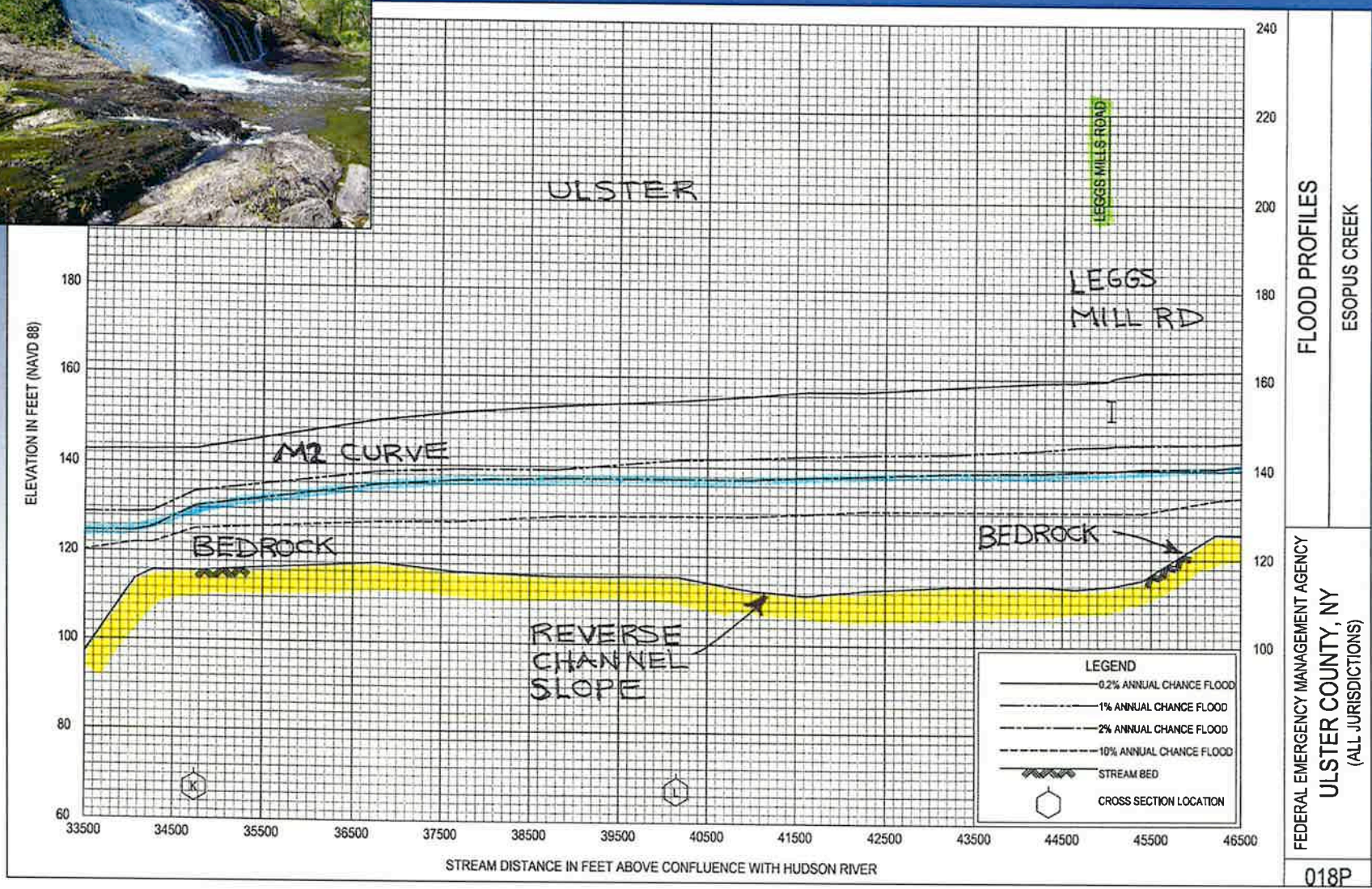
# APPENDIX B

# FEMA FLOOD PROFILES

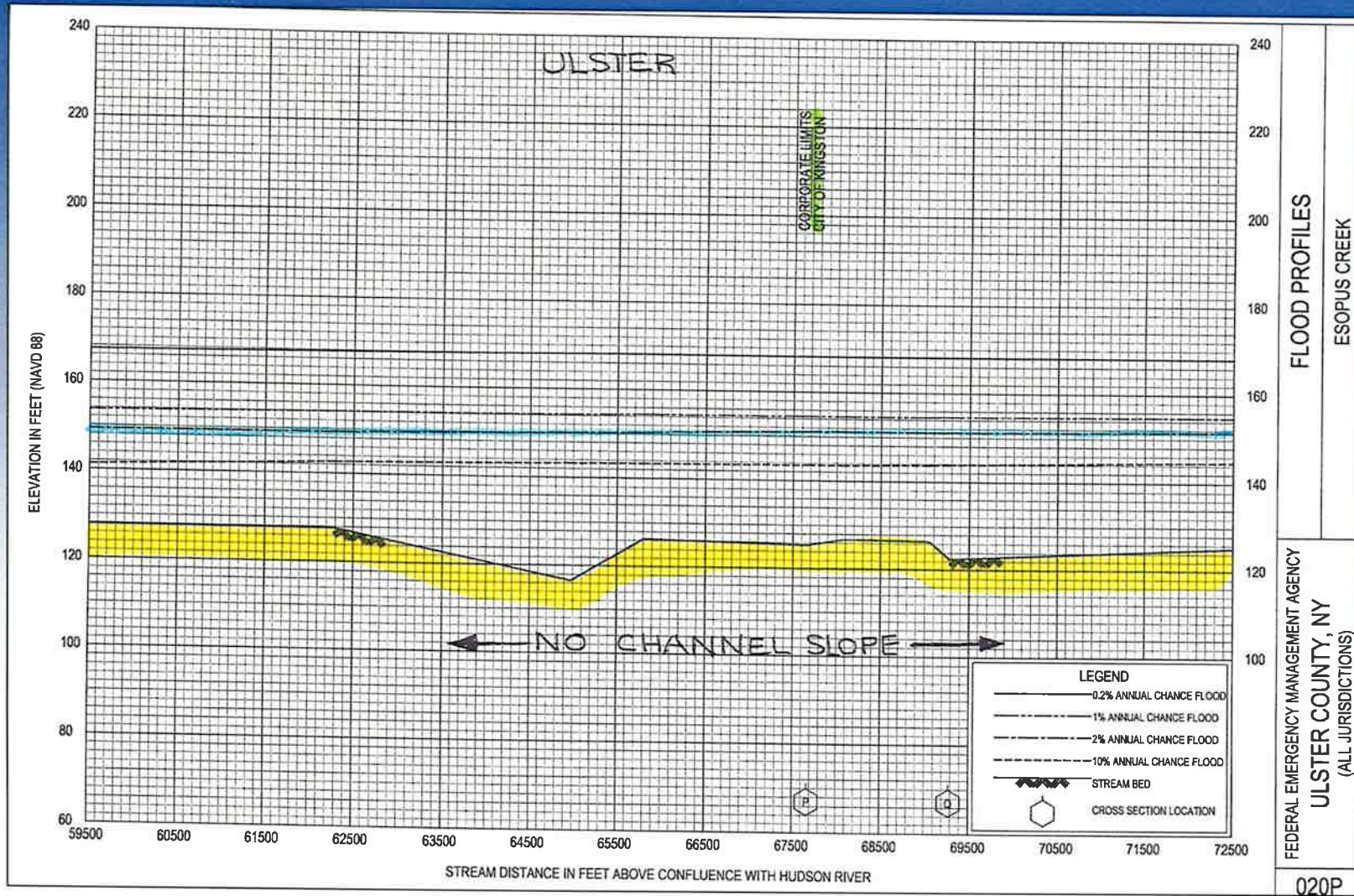


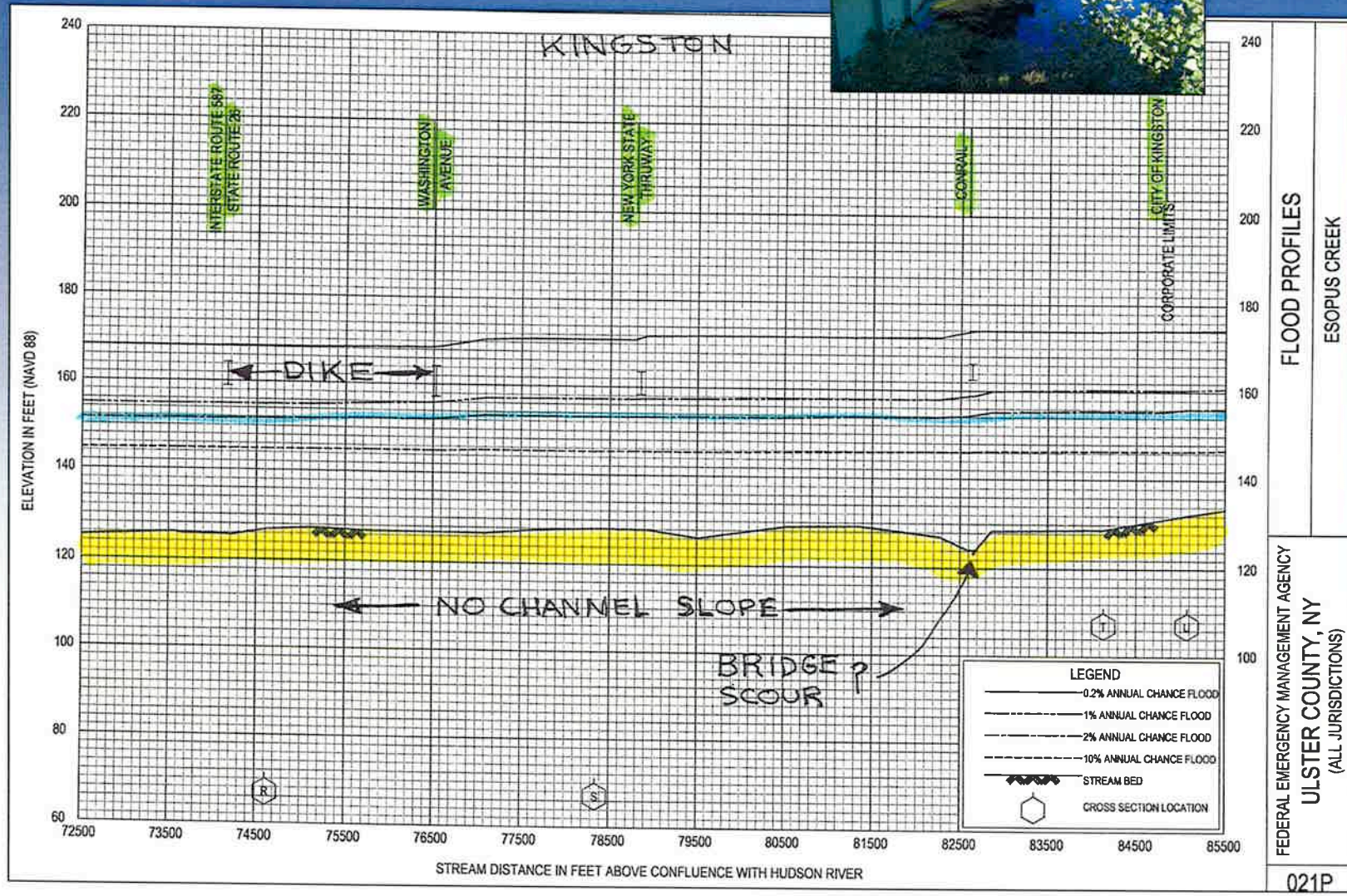


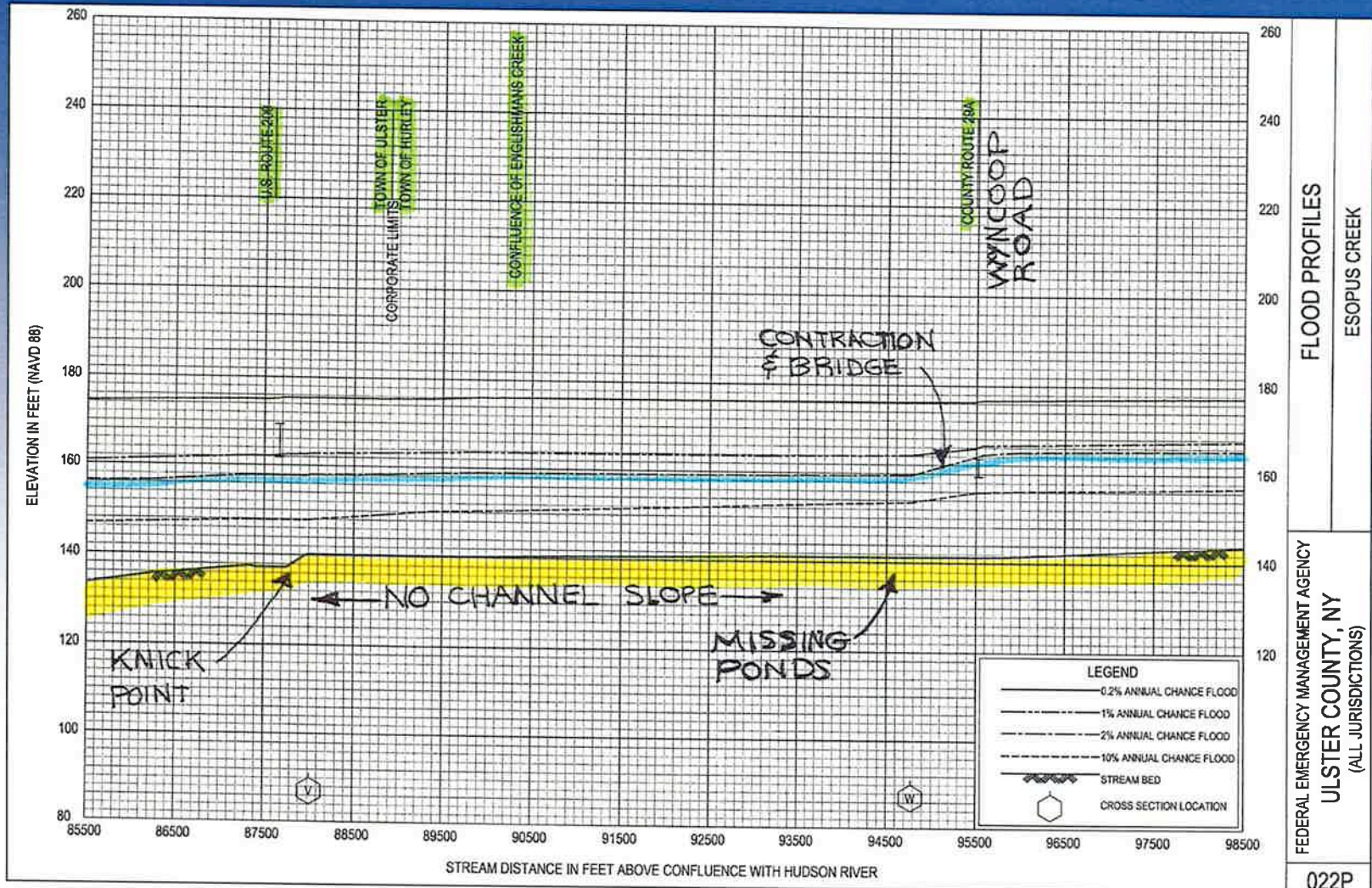










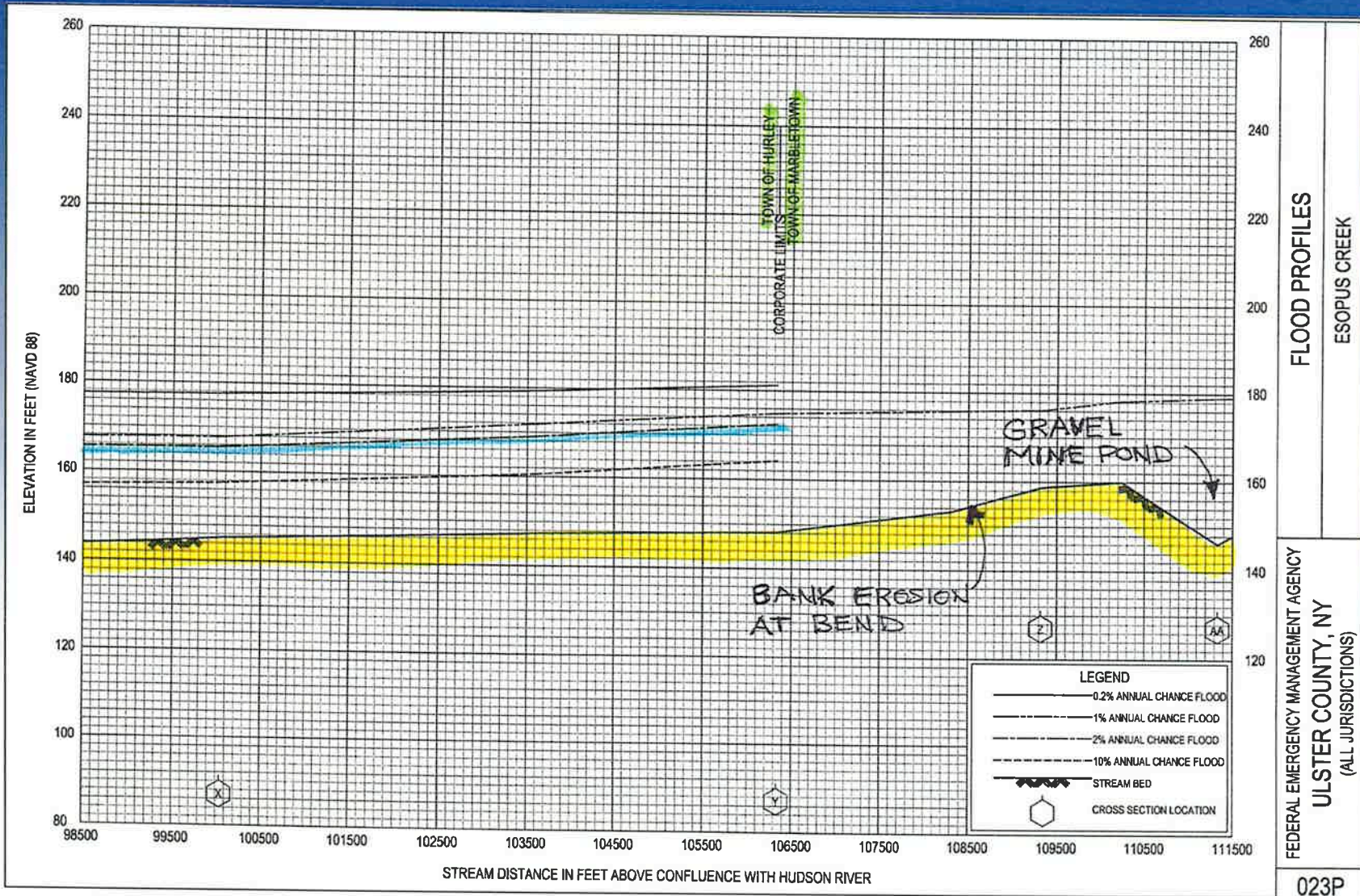


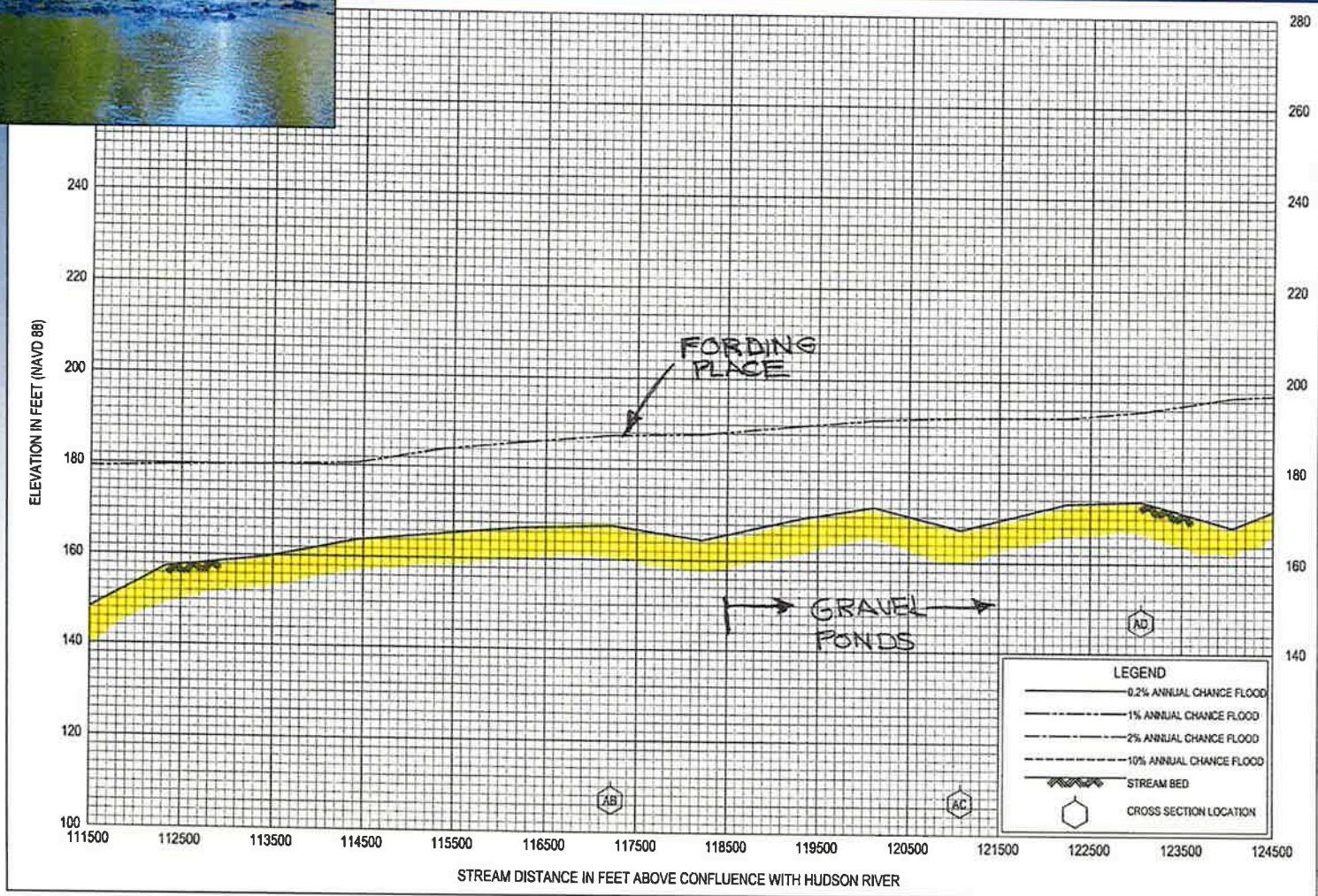
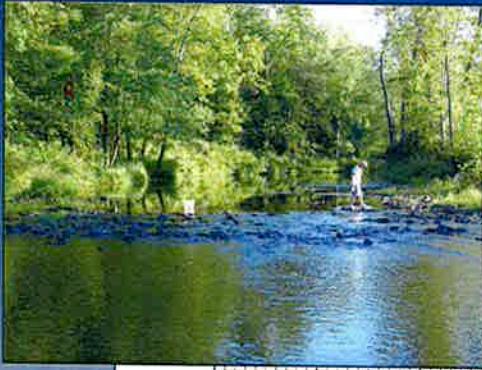
FLOOD PROFILES

ESOPUS CREEK

FEDERAL EMERGENCY MANAGEMENT AGENCY  
 ULSTER COUNTY, NY  
 (ALL JURISDICTIONS)

022P





FLOOD PROFILES  
ESOPUS CREEK

FEDERAL EMERGENCY MANAGEMENT AGENCY  
ULSTER COUNTY, NY  
(ALL JURISDICTIONS)

024P